



Consulting
for timber construction

Strategic.
Efficient.
Focused.



Strategien
put into practice.

Shaping the future.

SCHULER CONSULTING. SUPPORT FOR YOUR SUCCESS.

We want to shape the future of your business with you. To equip you perfectly. And lead you to success. Because only those who recognise opportunities, define them and consistently implement them will be rewarded. Reviewing the status quo, questioning the tried and tested and breaking new ground. That is how the future works today.

Content

- 04 Digitalisation in timber construction
- 06 Strategic Production Development
- 10 Lean Production
- 12 SCHULER Company ECG
- 15 SCHULER Consulting: Your partner for timber construction

On to digital horizons!



More attractive and efficient workplaces by optimising towards lean production.

- Reduce waste (material, time, space, cost)
- Analysis and reduction of non-value added process times



Targeted automation and analysis of your processes and production

- Comprehensive analysis of your business from office to the construction site
- Development of a technology concept and recommendations for machine selection



AS-IS and TO-BE analysis as a basis for the digitalisation of your company's internal processes

- Software recommendations for work preparation
- Strategic roadmap for your digitalisation



Digitalisation in timber construction:

Getting focused and successful



We will analyse the relevant core processes in your organisation and provide you with targeted recommendations on how to break the vicious circle of labour shortages. Together, we pave the way for meaningful digitalisation and automation. The result? You gain competitive advantages in productivity, efficiency and quality and create attractive workplaces in your company.



Recommendations for structuring and optimising your products

- Recommendations for improving and standardising your designs to increase automation and production efficiency



Support for product standardisation

- Recommendations for:
 - Construction of wall, roof and ceiling structures
 - Window and door openings
 - Component variety and dimensions



Automation and digitalisation know-how:

- Advice on the appropriate level of digitalisation and automation.
(Where do I need to digitise? Where does automation make sense?)



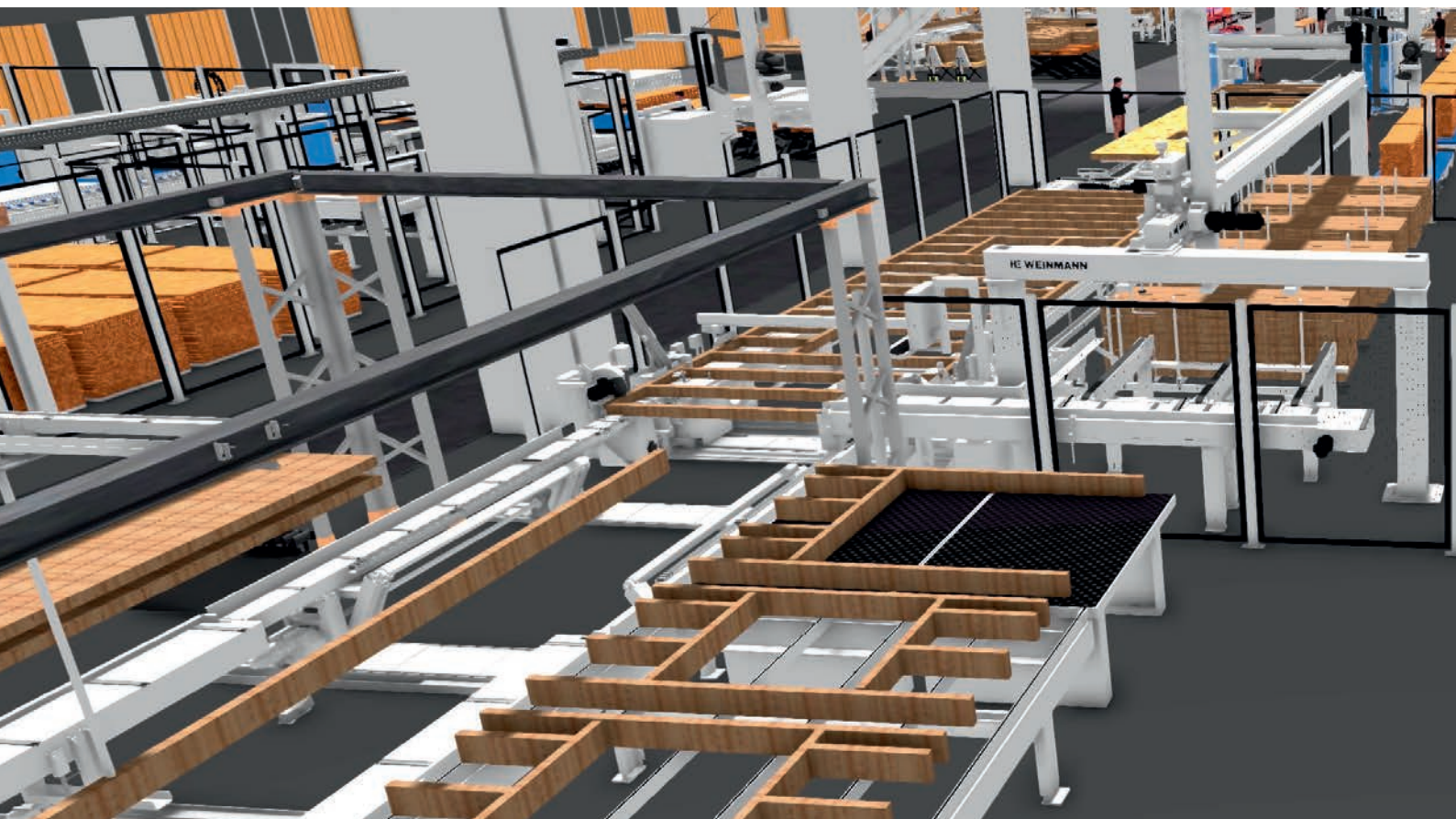
Strategic Production Development:

Produce optimally and build economically

Whether you are planning a new building on a greenfield site, an expansion or a rebuild, we know what it takes to plan the best production for you.

We analyse the optimal material flow in your production, discuss the choice of technology, plan the positioning of machines and workstations, and align production with your business objectives.

The planning project is rounded off by a comprehensive profitability analysis of the production concept and the technologies used. Your short and long term investment decisions are thus based on a well-founded overall concept that will give you planning security and enable you to proceed in a targeted manner.



New construction, expansion planning and product definition



NEW CONSTRUCTION

Strategic planning of production, organisation and processes



EXPANSION PLANNING

Efficient use of existing buildings and resources



PRODUCT DEFINITION

We support you from the very beginning:

- What quantities do you want to produce?
- Where are potentials for standardisation? (Wall construction, material flow)
- How do decisions in construction physics influence the production processes?
- Where can material be saved?
- Which decision is the right one: make or buy?
- What level of digitalisation and automation do you need?



Strategic Production Development

Our proven approach



Pre-project

Detailed product analysis

Capacity calculation

Definition of production routes

Lot development plan

Production concept

Technology concept

Elaboration of block layouts

Profitability calculation



Detailed project planning

Specification of the targeted machines

Creation of a machine specification list

Requirement list

Planning of the detailed layout

3D visualisation

3

Project realisation

Preparation of technical parameters

Project implementation plan

Concept plans as a guideline for:

Compressed air

Dust extraction

Electrical distribution

4

Production ramp up

Onboarding and training phase

Performance phase

Performance specification

Quality management

Continuous improvement

This is not rocket science,

but it will make your everyday work faster and more efficient.

Often it is the many small things that add up to have a big impact on your employees' time and therefore the efficiency of your production. Our Lean Workshop is not about highly complex rocket science. We start where things get stuck in day-to-day operations and look at how we can simplify your processes using lean methods. In multi-stage workshops, we provide you and your staff with the tools you need to make sustainable, long-term improvements to your business. The results are manifold and immediately noticeable.

- ✓ Employees actively shape the workshops
- ✓ Solutions that support employees in their daily work
- ✓ Reducing non-value-added activities
- ✓ Direct implementation of optimisation ideas
- ✓ The SCHULER team supports in setting up the Lean organisation
- ✓ Saving resources immediately
- ✓ Measurable increase in productivity
- ✓ Short implementation times
- ✓ Ergonomic workstations





Lean Production:

Streamlined processes = Higher productivity

We simplify your processes and workflows with targeted measures. This saves you valuable time and gives you more capacity for what really matters: **Your production.**

A Lean Workshop can take place in different parts of the company: In the machine-related environment, at work and assembly stations, in work preparation and administration, or at junctions between internal business units.

Best practice: Improvement of material flow

The stake magazine eliminates temporary fixings and inconsistent placement of wall elements on the shop floor.

The storage system provides enough space for finishing facades and installing windows. Time-consuming individual solutions are no longer necessary. Everything has a place and a system!



Before: The wall units are temporarily fixed to the room in a freestanding position. The assembly of the wall elements and the exact alignment for the window installation takes a lot of time and effort.



After: The wall elements can be positioned and aligned in a quick and easy way.

Best practice: Optimal workplace design

Thanks to the reorganisation, you no longer have to waste time looking for tools and materials. Everything is at your fingertips!



Before: Time spent searching for tools and/or materials is not only inconvenient, but also detracts workers from the job at hand.



After: Everything is in place. The required tools are always at hand.



SCHULER Company ECG:

The right strategy for your future.

What do we offer? No one-size-fits-all solutions!

Every business is unique and the challenges it faces are diverse. Market changes leave no company untouched. If you want to stay ahead, you need to take action. For the timber industry, this means streamlining and optimising processes, automating and digitalising. But where to start?

Our approach

01

ORIENTING

What is the state of your business today?



02

FOCUSING

Which optimisation potentials are there?



03

REALIZING

What takes priority?



OUR APPROACH

- On-site visit to your production
- Analysis of your processes, production and organisation
- Development of a concept with short- and long-term recommendations
- Priorisation of your need for action

POSSIBLE FOCUS

- Manufacturing concept: increasing efficiency through machines and systems
- Machine and workplace positioning
- Production logistics
- Optimal material flow
- Information flow from the office to the construction site
- Efficient and ergonomic workplaces

YOUR BENEFITS

- Precise, strategic concept as a roadmap for your future decisions
- Clear results
- Fact-based decisions
- Direct, concrete optimisation proposals for immediate implementation
- Proposals for the further development of your company

A man with short brown hair and a light beard, wearing a dark blue crew-neck sweater over a light blue collared shirt, stands in a factory or industrial setting. He is smiling slightly and looking towards the camera. He holds a pen in his right hand and a stack of papers in his left. The background is filled with industrial equipment and bright, rectangular lights on the ceiling, creating a warm, slightly blurred atmosphere.

At the beating heart of your business.

Listening to the heart on strategic matters?

We measure how and where the pulse of your company beats. We work with you to assess how you can respond to new market demands and meet future challenges.

A photograph of two men in a factory setting. The man on the left is older, with grey hair and glasses, wearing a dark blue sweater over a light blue collared shirt. The man on the right is younger, with dark hair, wearing a dark blue sweater over a white collared shirt. They are shaking hands and smiling. In the background, there is industrial equipment, including a crane arm with a weight labeled '85 kg' and a sign that says 'KONELANES'.

On the path to industrial production

“I think the SCHULER Company ECG is very good. It gives you an overview of where you are today. And you immediately get a catalogue full of measures for further implementation.”

Tillmann Schütt, Managing Director, Gebr. Schütt KG.

SCHULER Company ECG in practice

See how Schütt is transforming into an industrial construction company with the support of SCHULER Consulting.

[MORE AT SCHULER-CONSULTING.COM](https://www.schuler-consulting.com)



SCHULER Company ECG

We are SCHULER: Your partner for timber construction!



Deeply rooted with the industry since 1956.
Build on us!

Strategies for your future. Support for your success.

As experienced timber engineers, project managers and business managers, we have deep roots in the timber industry. Each of us brings his or her experience to the projects and is a responsible and reliable partner for you. Our aim is to help you achieve sustainable success. We will work with you to develop the right strategies for your future in the timber industry.

30
EMPLOYEES

Get to know us.
We look forward to advising you personally!

Phone: +49 7445 830-791 00

Email: info@schuler-consulting.com

>65
YEARS OF EXPERTISE





SCHULER Consulting GmbH

info@schuler-consulting.com
www.schuler-consulting.com

Karl-Berner-Straße 4
72285 Pfalzgrafenweiler

Phone.: +49 7445 830-791 00

